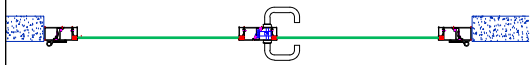


Pull side view Double Door

Pull side view Single Door

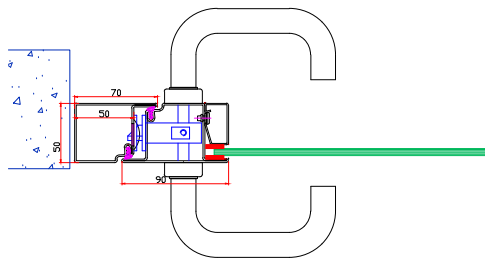
Push side view Single Door



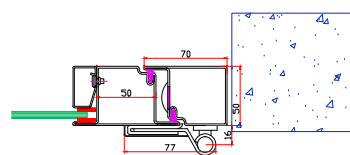
Section A-A



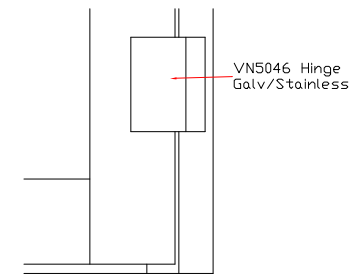
Section C-C



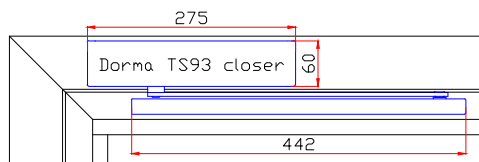
Lock Jamb



Hinge Jamb

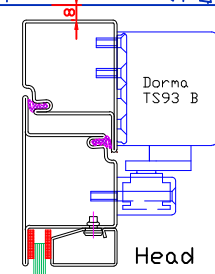


Lower hinge

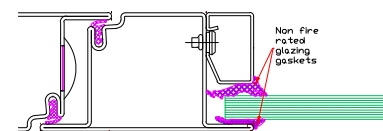


Closer

Lowest ceiling height to allow for hanging door and future maintenance



Head

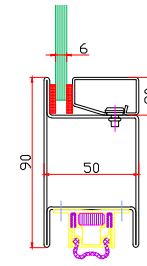


Non fire rated glazing

REVISIONS			
REV	DESCRIPTION	DATE	APPROVED
A	Example SG20	04/06/2014	-

NOTES

This example shows Presto 50 single and double with standard lever handles, Standard hinges and Dorma closer. Standard lock with top locking rod required for fire rated doors. Drop seal required for fire rated doors. Single action.



Drop Seal

TITLE

SG20 - Presto 50-1

MATERIAL

1.5mm Profiles  
Mild steel or Stainless

DWG NO.

Doorset Examples\SG20.dwg

DRAWN BY

JR

DATE

04/06/2014

REV

A

SCALE

N.T.S

SHEET

1 OF 4

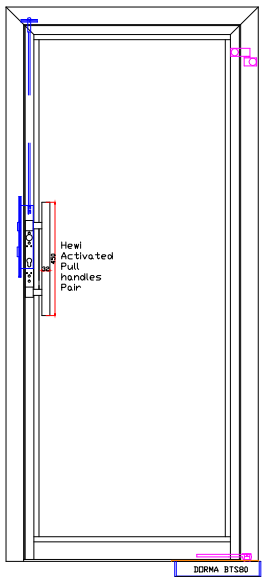


**DoorTechnik**  
SECURE DOOR SYSTEMS

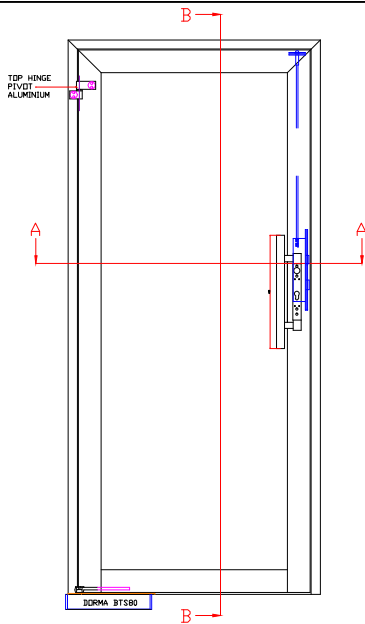
Moor Lane, Thorpe on the Hill, Lincoln, LN6 9BW  
Tel 01522 693522 Fax 01522 508494  
www.doortech.co.uk info@doortech.co.uk

Disclaimer:

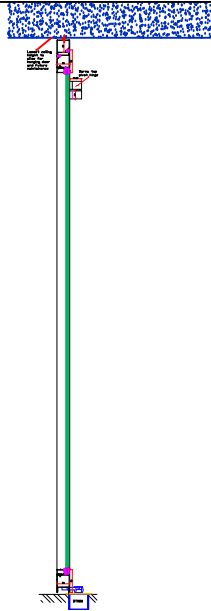
Drawing is indicative of standard model range, and features may differ for production doorsets. If particular performance criteria or features are important to your project, please call us to discuss your requirements.



VIEW FROM PUSH SIDE



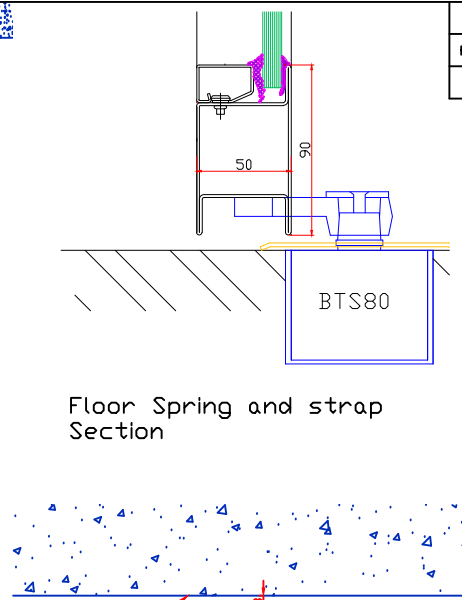
VIEW FROM PULL SIDE



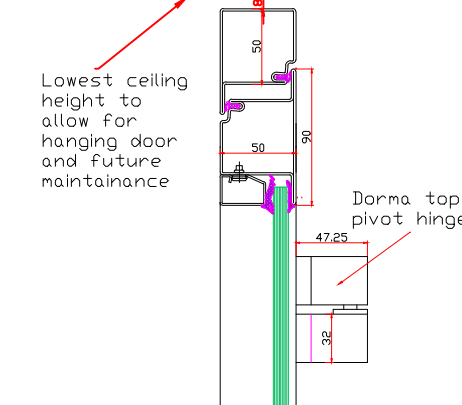
SECTION B-B



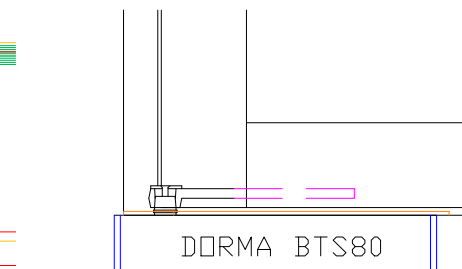
SECTION A-A



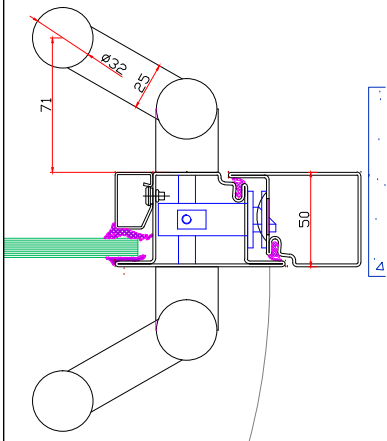
Floor Spring and strap Section



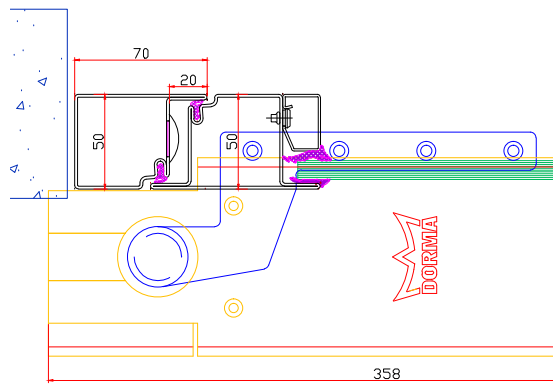
Top pivot hinge



Floor spring front



Lock Jamb



Hinge Jamb

REVISIONS			
REV		DATE	APPROVED
A	Example SG20	04/06/2014	-

NOTES

This example shows Presto 50 single with Hewi activated handles, Offset floor spring closer positioned on pull side of door. Standard lock with top locking rod required for fire rated doors. Drop seals can not be used with floor springs. Single action.

TITLE

SG20 - Presto 50-2

MATERIAL

1.5mm Profiles

Mild steel or Stainless

DWG NO.

Doorset Examples\SG20.dwg

DRAWN BY

JR

DATE

04/06/2014

REV

A

SCALE

N.T.S

SHEET

2 OF 4

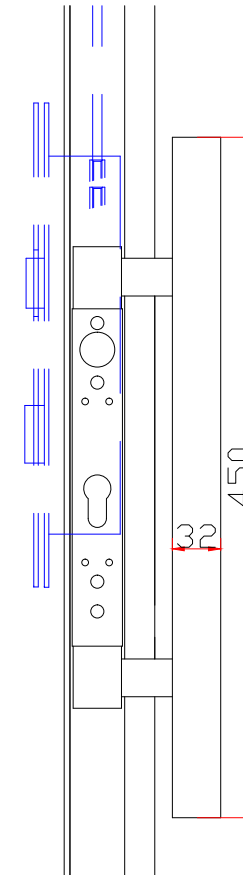


**DoorTechnik**  
SECURE DOOR SYSTEMS

Moor Lane, Thorpe on the Hill, Lincoln, LN6 9BW  
Tel 01522 693522 Fax 01522 508494  
www.doortechin.co.uk info@doortechin.co.uk

Disclaimer:

Drawing is indicative of standard model range, and features may differ for production doorsets. If particular performance criteria or features are important to your project, please call us to discuss your requirements.

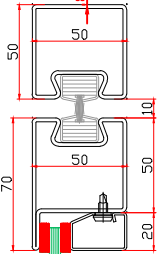


Hewi activated handles

REVISIONS			
REV		DATE	APPROVED
A	Example SG20	04/06/2014	-



Lowest ceiling height to allow for hanging door and future maintainance



Head

**NOTES**  
 This example shows Norm DAD single and double, Floor spring closer positioned central. Double action fire rated. Powder coated mild steel only. Cranked pull handles shown various handles available.

**TITLE**  
 SG20 - Norm DAD

**MATERIAL**  
 1.5mm Profiles  
 Mild steel only

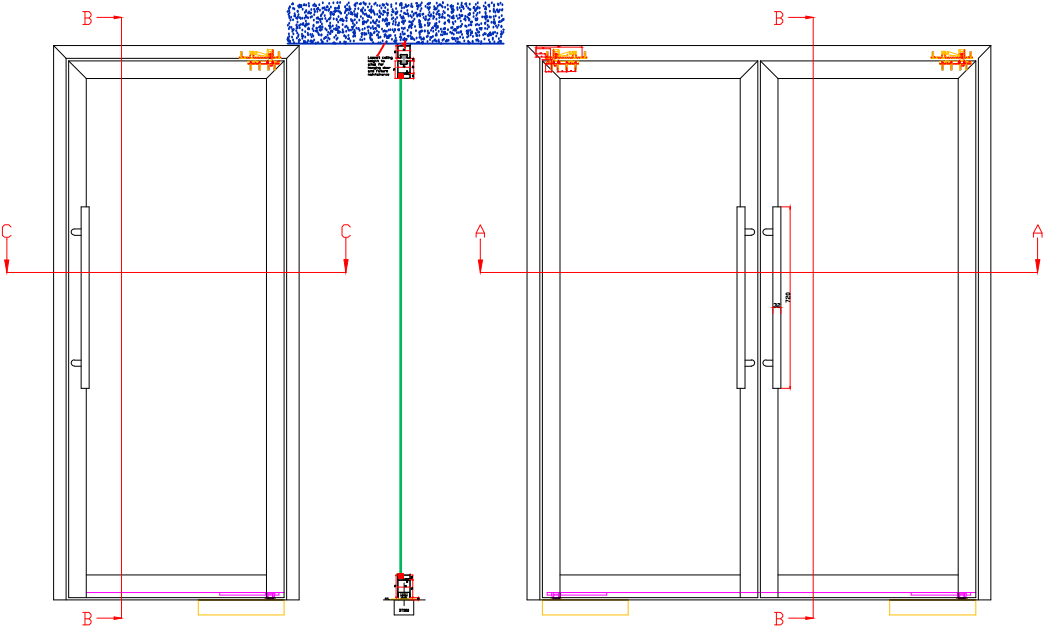
**DWG NO.**  
 Doorset Examples\SG20.dwg

<b>DRAWN BY</b> JR	<b>DATE</b> 04/06/2014	<b>REV</b> A
-----------------------	---------------------------	-----------------

<b>SCALE</b> N.T.S	<b>SHEET</b> 3 OF 4
-----------------------	------------------------

**Doortechnik**  
 SECURE DOOR SYSTEMS  
 Moor Lane, Thorpe on the Hill, Lincoln, LN6 9BW  
 Tel 01522 693522 Fax 01522 508494  
 www.doortechnik.co.uk info@doortechnik.co.uk

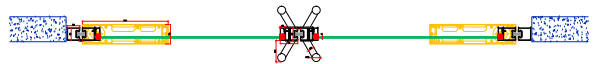
**Disclaimer:**  
 Drawing is indicative of standard model range, and features may differ for production doorsets. If particular performance criteria or features are important to your project, please call us to discuss your requirements.



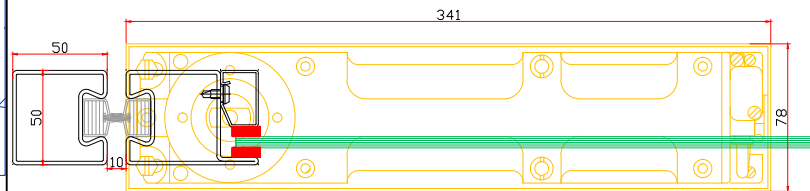
SECTION B-B



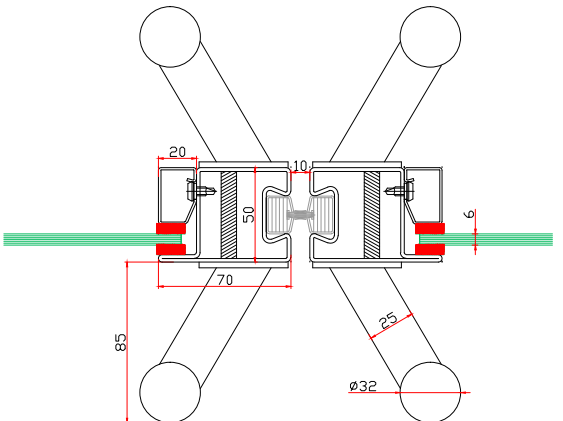
SECTION C-C



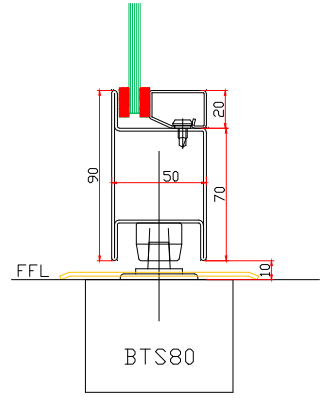
SECTION A-A



Pivot Jamb

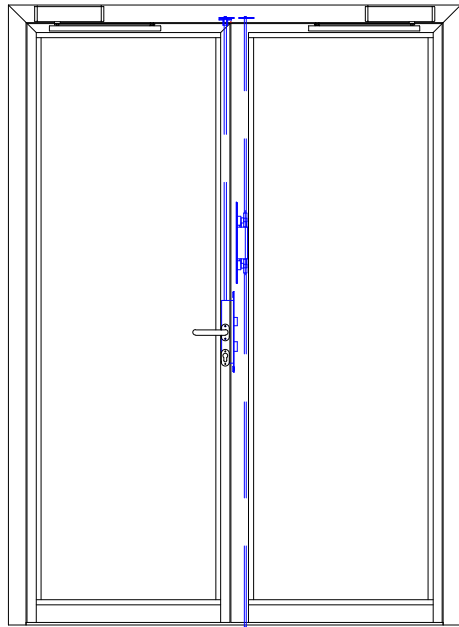


Meeting Stile

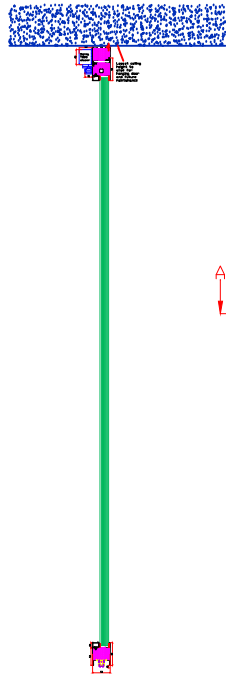


Floor spring

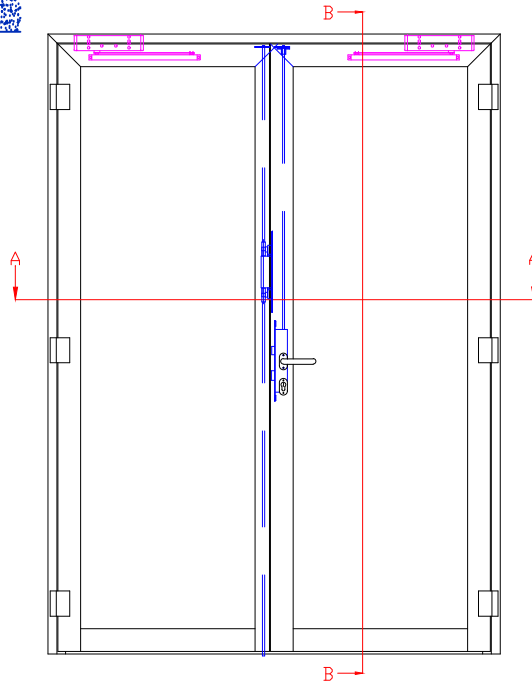
BTS80



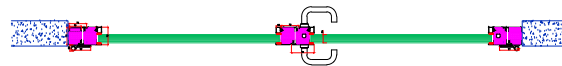
VIEW FROM PUSH SIDE



SECTION B-B

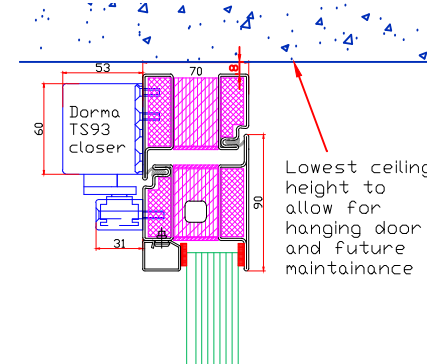


VIEW FROM PULL SIDE

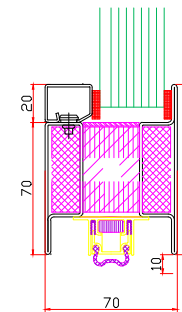


SECTION A-A

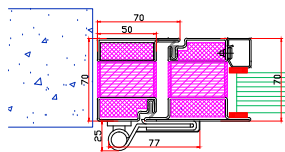
REVISIONS			
REV		DATE	APPROVED
A	Example SG20	04/06/2014	-



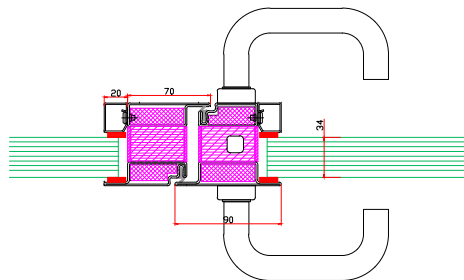
Head



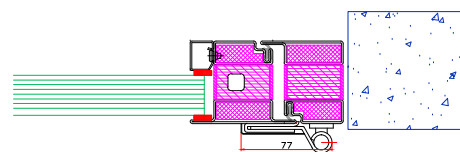
Drop Seal



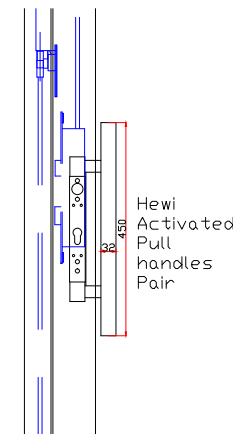
Hinge Jamb



Meeting Stile



Hinge Jamb



Optional Hewi pull handles

NOTES

This example shows Fuego Light EI90 double, Standard hinges and Dorma TS93 closer, various handles available.

TITLE

SG20 - Fuego Light EI90

MATERIAL

1.5mm Profiles  
Mild steel/Stainless Steel

DWG NO.

Doorset Examples\SG20.dwg

DRAWN BY

JR

DATE

04/06/2014

REV

A

SCALE

N.T.S

SHEET

4 OF 4



**Doortechnik**  
SECURE DOOR SYSTEMS

Moor Lane, Thorpe on the Hill, Lincoln, LN6 9BW  
Tel 01522 693522 Fax 01522 508494  
www.doortechnik.co.uk info@doortechnik.co.uk

Disclaimer:

Drawing is indicative of standard model range, and features may differ for production doorsets. If particular performance criteria or features are important to your project, please call us to discuss your requirements.