



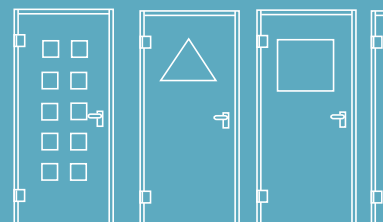
**DoorTechnik**  
SECURE DOOR SYSTEMS



# RX15

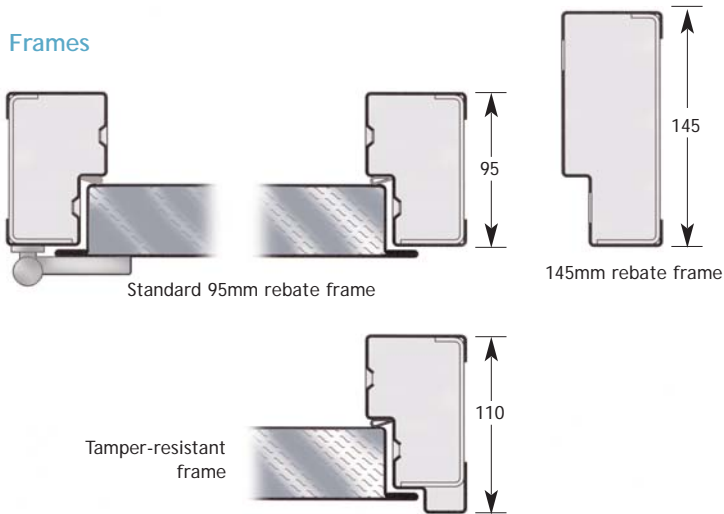
STEEL DOORSET

a new concept in steel  
doorsets for commercial  
and industrial buildings



## RX15

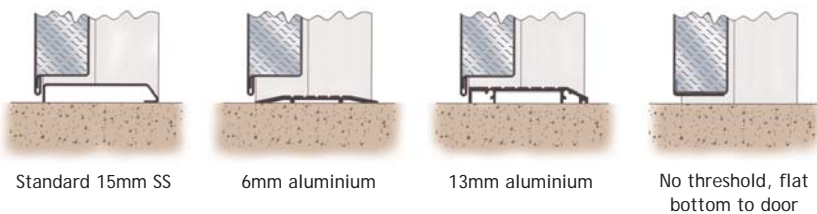
### Frames



### Meeting stiles for double doorsets



### Thresholds



The RX15 is a visually striking doorset, finished to the highest quality. Bespoke construction using 1.6mm Rimex stainless steels and the best quality fittings, combine to create unique statements of personal taste.

### Uses

For internal or external front-of-house situations

- ¥ Hotels
- ¥ Restaurants
- ¥ Prestigious apartments
- ¥ Reception areas
- ¥ Panic rooms

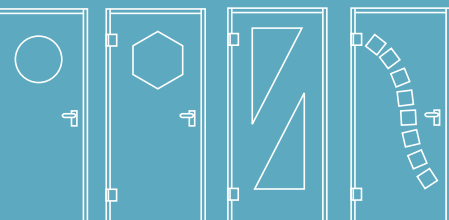
### Locking systems

Only the best quality locking systems from the leading manufacturers are fitted. We can offer single and multi-point locks, with or without escape functions. The RX15 can be part of a large access control system or used as a stand-alone unit. As locking systems can be complex, particularly when escape functions and security are concerned, we are always pleased to offer advice.

### Closers

Overhead closers are versatile and useful. Depending on the model chosen they can also:

- ¥ Control the opening and closing speed - useful in windy situations.
- ¥ Restrict the door opening angle - to prevent damage to doors and the reveal corners.
- ¥ Hold a door open - useful when carrying goods through.
- ¥ Delay closing — helpful for parents with buggies or people with limited mobility.



01522 693522

[www.doortechnik.co.uk](http://www.doortechnik.co.uk)

## Technical Information

### Technical Details

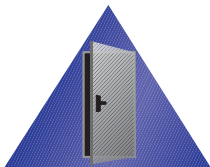
Door construction of 1.6mm steel, with internal reinforcing and an insulated core. Thickness 45 or 55mm. Overhanging flanges to all four edges for security and weatherproofing. Three security pegs to hinge edge.

Frame construction of 1.6mm steel with internal reinforcing, integral frame adjusting screws and flexible weather seals. Adjustable standard hinges or continuous stainless steel hinges. 12 fixing points through jambs, 3 through threshold.

Weight - 80kg for 1000 x 2100 single.

### Installation

DoorTechnik are able to offer a full installation service across the UK, using our own highly skilled engineers.



**DoorTechnik**  
SECURE DOOR SYSTEMS

Moor Lane, Thorpe on the Hill, Lincoln. LN6 9BW  
Tel : 01522 693522  
Fax : 01522 508494  
Web : [www.doortechnik.co.uk](http://www.doortechnik.co.uk)  
Email : [info@doortechnik.co.uk](mailto:info@doortechnik.co.uk)

### Finishes and Materials

Rimex stainless steels combine many remarkable textures, colours and patterns. The texturing process work hardens the steel to increase its toughness. The material is suitable for exterior use, is difficult to damage, hides dents and scratches and is a deterrent to vandalism. On satin and mirror finish material, a state of the art etching technique offers standard patterns, custom designs such as company logos, or even unique and original art to your own design.

More material can be found at [www.rimexmetals.com](http://www.rimexmetals.com)



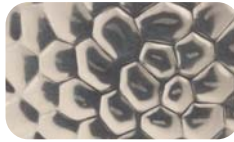
10WG



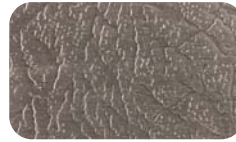
12LG



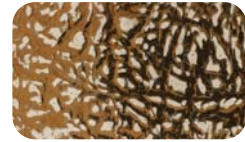
Chain



8HP



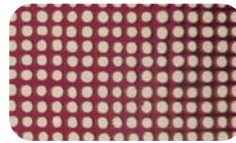
9EH



Pantheon



Cambridge



Canvas



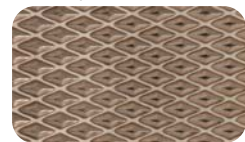
Pinstripe



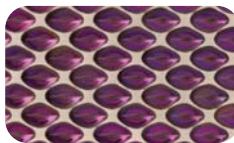
Checks



Pagoda



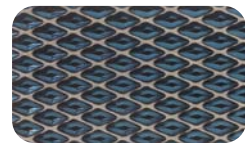
Pyramid bronze



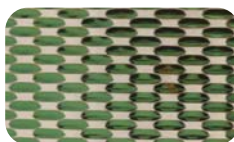
Pearl



Pegasus



Pyramid blue



Prism



Speckle



Stripe

All patterns and textures are available in all colours shown.

DoorTechnik has a policy of continual product development and technical changes may occur.

DoorTechnik is a trading name of F R White Ltd.  
Moor Lane, Thorpe on the Hill, Lincoln. LN6 9BW