

L41101:P314 | D1111:X314

| (31.5) | Xo |



**DoorTechnik**  
SECURE DOOR SYSTEMS



# GL15

## GLASS DOORSET

minimalistic glass  
doorsets for clarity  
and simplicity



#### Finishes and materials

Door panel of toughened glass, which may be clear, obscure or coloured. Manifestation is offered for company logos, decorative effects and Part M compliance.

Frame construction of mirror polished or satin stainless steel, polished brass, Rimex textured steels, or polyester powder coated steel to any BS or RAL colour.





# GL15

The GL15 is a frameless glass door in a steel frame, often used for entrances to public buildings

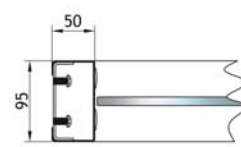
### Uses

- ¥ Shops
- ¥ Offices
- ¥ Hotels
- ¥ Restaurants
- ¥ Reception areas

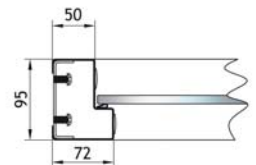
### Glass Mounting

Double action doors are normally hung on corner patches or full-width rails, attached to concealed transom closers or floor springs. Single action doors may be hung on adjustable hinges. Closers and floor springs are available with or without hold-open functions.

### Frames & Thresholds



Plain frame, for double action doors



Rebate frame, for single action doors



9mm aluminium threshold for bottom pivot



Floor spring without threshold



### Locks & Handles

Available in a variety of styles and finishes, we can include lever and pull handles, locking top and bottom rails, top and bottom or central patch locks. Access control systems may be linked to concealed transom shearlocks. Escape doors may be fitted with panic bars or touch bars.



01522 693522

[www.doortechnik.co.uk](http://www.doortechnik.co.uk)



# Technical Information

## Technical Details

10mm or 12mm toughened glass door panel, with or without manifestation. Pull handles and locks are available as required.

Frame construction of 1.5mm material, with internal reinforcing and integral frame adjusting screws.

Plain frames for double action doors, are fitted with concealed transom closers, floor springs or self-closing hinges.

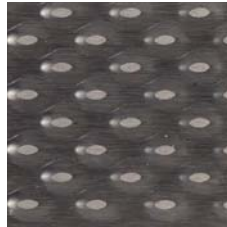
Rebated frames for single action doors, are fitted with flexible weather seals and adjustable hinges.

## Installation

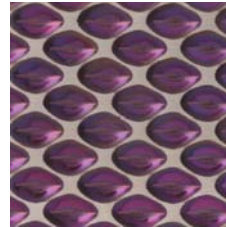
DoorTechnik are able to offer a full installation service across the UK, using our own highly skilled engineers.



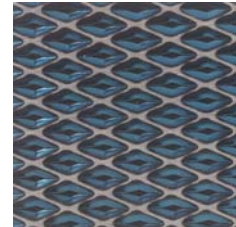
All patterns and textures are available in the colours below.



*Pagoda*



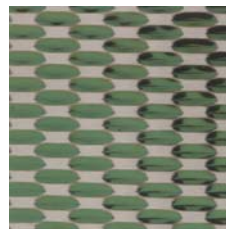
*Pearl*



*Pyramid Blue*



*Pegasus*



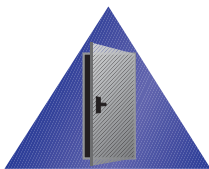
*Prism*



*10WG*

Shown is a small selection of the range. For more options please contact our sales team.

DoorTechnik has a policy of continual product development and technical changes may occur.



# DoorTechnik

SECURE DOOR SYSTEMS

Moor Lane, Thorpe on the Hill, Lincoln. LN6 9BW

Tel : 01522 693522

Fax : 01522 508494

Web : [www.doortechnik.co.uk](http://www.doortechnik.co.uk)

Email : [info@doortechnik.co.uk](mailto:info@doortechnik.co.uk)

DoorTechnik is a trading name of F R White Ltd.  
Moor Lane, Thorpe on the Hill, Lincoln. LN6 9BW